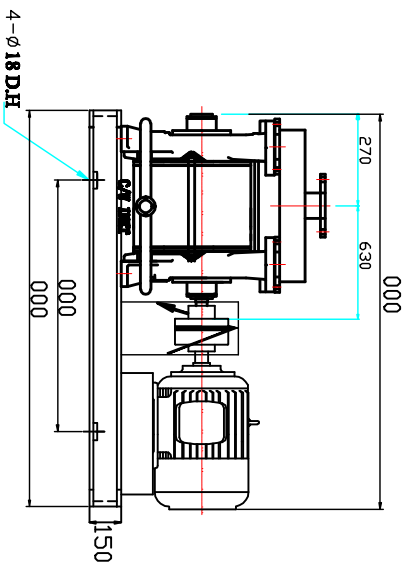
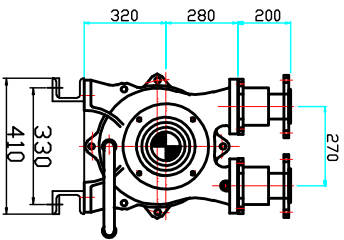
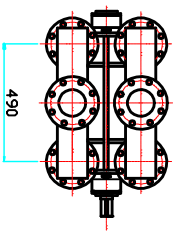
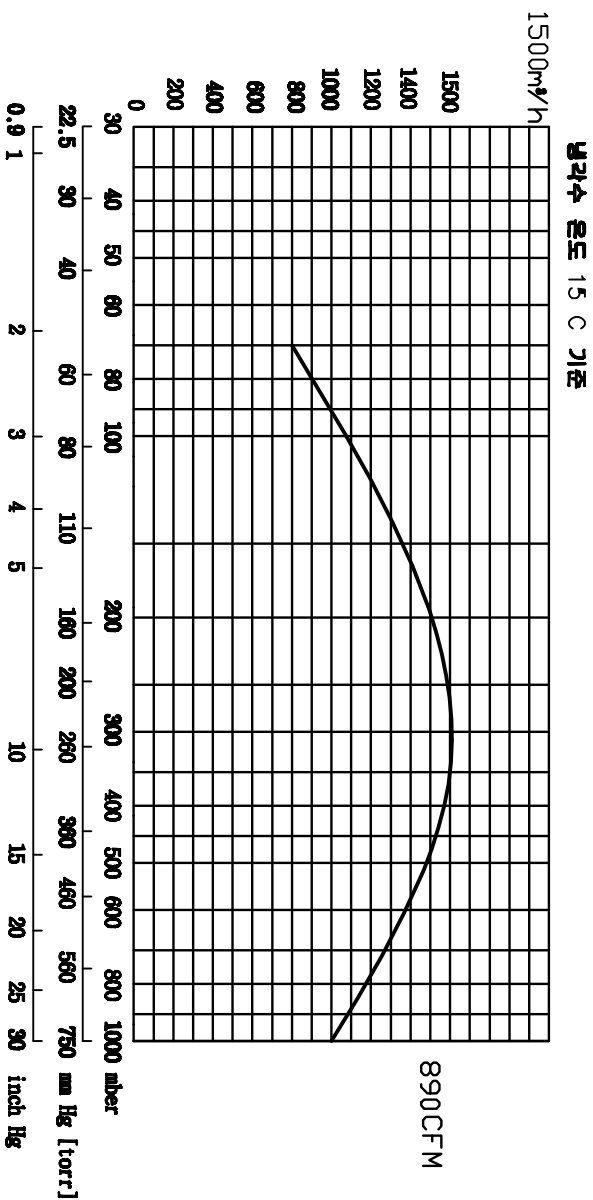


SPECIFICATIONS

Design	20000 Lit./min(50Hz)
Displacement	25000 Lit./min(60Hz)
Speed	920 r.p.m. (50Hz) 1150 r.p.m. (60Hz)
Normal usage	Under Torr
Attainable vacuum pressure	Max 50Torr
Suction port diameter	KS 150A (2)
Motor	Horizontal Motor Standard 3-Phase 220/380V 60Hz 45KW 6P
Water Capacity	15° C 기준 130L/MIN
Weight	580 Kg
Painting	Color- VL951 (Company's standard)
Allowable ambient temp.	-10~40°C

-1 Excluding motor and some other parts.

Curve referred to dry air at 20°C (68°F) 배 기 흡 SUCTION CAPACITY



ACCESSORIES(OPTION)

- Vacuum Manual Valve
- Vacuum gauge
- Vacuum Check Valve
- Separator Tank

CONSUMABLE LIST

(VACUUM RING GENUINE PARTS)

Designation	Specification	Quantity/set
Grand packing		2
Bearing	5314,NU314 ZZ (Special Heat - resisting grease)	2
Pulley	(M)φ300 (P)φ400	1
Shaft key	φ60 80 X 9	1

- 품질 개선을 위해서 예고없이 변경 될수 있음.
- Not binding dimension that can be changed to motor make

DWG DATE	SCALE	TITLE	WATER RING V/P
2006.04.14	NK		
DWG BY	DESIGN BY	CLIENT	
	CHDBY	APPROVE	
		LOCATION	
		DWG NO	JLRP1-250



진공엔지니어링